

# Care Provider Sizing and Order Form

More Care for Less COST!  
The LEEDer Way.



**LEEDerGroup.com Order Form**  
**Toll Free Ph: 1(866)814-0192**  
**Toll Free Fax: 1(866)818-0373**

**Company Name:** \_\_\_\_\_

**Telephone:** \_\_\_\_\_

**P.O. Number:** \_\_\_\_\_

**Ship To:**  
**Facility or Name:** \_\_\_\_\_

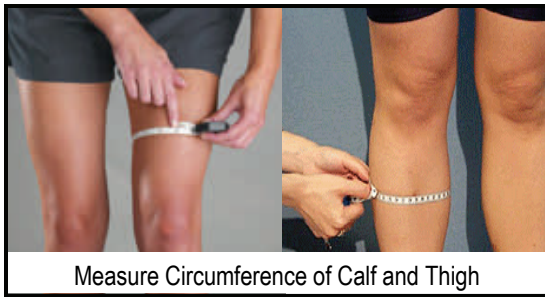
**Attn:** \_\_\_\_\_

**Address:** \_\_\_\_\_

**City:** \_\_\_\_\_

**State:** \_\_\_\_\_

**Zip Code:** \_\_\_\_\_



Measure Circumference of Calf and Thigh

### **KNEE SUPPORTS**

Knee Arthritis, Knee internal Debrigement, Knee Sprain, Knee Fracture, Knee Mediscal Tear, Knee Synovitis, Knee Loose Body, Knee Sub Patella, Contracture

LEEDer Knee w/ Double Upright Hinges

**QTY:** \_\_\_\_\_ **Size:** S M L

Size	Circumference
Small	Calf 6" - 9" ; Thigh 11" - 16"
Medium	Calf 10" - 13" ; Thigh 16" - 20"
Large	Calf 13" - 16" ; Thigh 20" - 25"



Measure circumference of Bicep & Forearm

### **ELBOW SUPPORT**

Arthritis, Dislocation, Osteoarthritis, Bursitis, Tendonitis, EpyCondylitis, Fracture, Sprain, Lai Epecond, Contracture, Elbow Other

LEEDer Elbow w/ Double Upright Hinges

**QTY:** \_\_\_\_\_ **Size:** S M L

Size	Circumference
Small	Bicep 8.5" - 10" ; Forearm 7.5" - 9"
Medium	Bicep 10.5" - 13" ; Forearm 9.5" - 12"
Large	Bicep 13.5" - 16" ; Forearm 12.5" - 15"

Measure Wrist to  
Elbow crease



### **WHFO HAND SPLINT**

Carpal Tunnel Syndrome, Weak Wrist, Stabilizer following cast removal, Rheumatoid Conditions, Tendon Sprain, Wrist Sprain, Wrist Fracture, Osteoarthritis, Contracture

### **WHFO**

**Grips** Size: S M L Side: L R **QTY:** \_\_\_\_\_

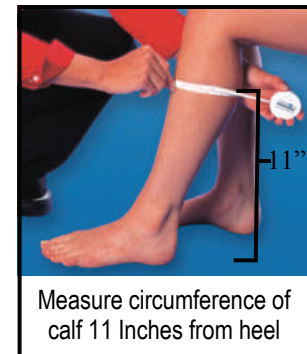
**Rest** Size: S M L Side: L R **QTY:** \_\_\_\_\_

**Dorsal** Size: S M L Side: L R **QTY:** \_\_\_\_\_

Size	Width of MP Joint (LEEDer Rest)	Wrist to Finger Tips (LEEDer Rest)	Wrist to Elbow Crease REST, GRIP, Dorsal
Small	2.5" - 3"	6" - 7"	< 8"
Medium	3" - 3.5"	7" - 8"	8" - 9.5"
Large	3.5" - 4"	8" - 9.5"	9.5" +

### **Multi Podus-Multi Use**

Size	Measurement
Pediatric	Child shoe size 12-6
Regular	Circumference of calf up to 16"
Large	Circumference of calf 16" - 20"
Extender Pack	Circumference of calf 20" - 24"



Measure circumference of calf 11 Inches from heel

### **AFO ANKLE FOOT Multi Podus and Multi USE**

Night Splint, Contracture, Plantar Fasciitis, Sprain, Fracture, Internal Derangement, Flaccid Foot, Sciatic, Post CVA, Instability, General Arthritis

### **AFO Ankle Foot**

**LEEDer Bed Boot:** Size: R L

**QTY:** \_\_\_\_\_

**LEEDer Boot w/ Rubber Sole** Size: R L

**QTY:** \_\_\_\_\_

**Multi-Use Boot:** Size: Adult Pediatric

**QTY:** \_\_\_\_\_

V.2009.11